

50 ft 2003 Lyman-Morse Wesmac Sportfish
Cruiser, MOSES

US\$2,500,000

Southport, Maine, United States



Boat Details

Make:	Lyman-Morse	Class:	Sport Fishing
Model:	Wesmac Sportfish Cruiser	Hull Material:	Fiberglass
Year:	2003	Beam:	17 ft 6 in
Length:	50 ft	Boat Location:	Southport, Maine, United States
Price:	US\$2,500,000	Name:	MOSES
Condition:	Used	Max Draft:	6 ft 3 in

Linda Greenlaw | Wesmac Boats

(207) 650-0403

lindgreenlaw@gmail.com

www.wesmac.com

Description

VESSEL DETAILS

HULL & DECK:

- Solid fiberglass hull with vinylester resin.
- Stringers are vacuum bagged, and topsides are cored (cockpit with high density foam).
- 12" S/S cleats.
- Fresh water washdown for anchors.
- Lone Star tuna anchor winch on bow.
- **New** hatch seals.
- **New** aft steering tuna station with **new** controls and flybridge and inside helm steering stations.
- Custom tubular aluminum structure for flybridge hardtop by Noel Redman.
- Aft helm has remote helm with autopilot.
- Large transom door and Bomar hatches provide below cockpit access.
- Engine room is accessed from the cockpit from pull-up walk-in door.
- **New** radar tower.
- Two **new** bait pumps that supply a bait well on deck, one in use and one a backup.

TANKAGE:

Fuel: 1250 gallons in 2 aluminum tanks.

Water: 190 gallons in poly tank.

Holding: 170 gallons in 1-105 gallon black tank and 1-65 gallon gray tank.

Hot Water: Seaward 20 gallon tank.

ENGINE & MECHANICAL:

- Single CatV12 3412E diesel, 1400 hp, tuned up yearly by Billings Diesel & Marine, Stonington, ME.
- Approximately 2800 hours on engine.
- Twin Disc FG-6557SG 2.04:1 transmission with electronic troll valve (serviced).
- 14" exhaust hose through transom.
- Aquamet 3" 22HS S/S shaft with dripless stuffing box.
- 5 bladed Teignbridge propeller.
- Racor MaV30 three filter system with control manifold.
- Reverso electric oil changing pump.
- **New** cutlass bearing.
- **New** trim tabs.
- Groco water strainer with Groco ball valve seacocks.
- Automatic CO2 fire suppression system.
- PTO installed (Power take off on transmission) – ready for hydraulics if wanted.
- Bilge alarms.
- 4 Rule 3700 bilge pumps.
- Hydraulic Sea Star steering with multi ram power steering assist; Sea Star steering station recently rebuilt by Billings Diesel & Marine.

- **New** Sidepower 10" hydraulic bow thruster (access under master berth).
- Cat engine monitoring panels at each helm.
- Cruising speed: 16 knots.
- Maximum speed: 21 knots.

ELECTRICAL:

- Ocean Options AC/DC current control panel.
- 24V/12V panel.
- 2- 50 amp shore power Glendenning Cable Master to port and starboard, 120V/240V service capable.
- 4 Optima Blue engine start batteries; 2 Optima Blue start batteries for genset; **new** 6V Lifeline gel house batteries.
- 12V Newmar 50 amp battery charger, **new 2024**.
- 24V Newmar 50 amp battery charger, **new 2024**.
- Mastervolt 5000w inverter.
- **Westerbeke 32BEDA, 32kw, 220V generator (electrical system rebuilt by Billings in 2024).**
- **Cruiseair 7000, 12,000 & 16,000 BTU air conditioners.**
- Ocean Pursuits electrical bonding system.

ACCOMMODATIONS: 3 staterooms in a high quality varnished mahogany interior.

SALON:

- Custom finished mahogany interior with teak trim.
- Deck sole is teak and holly.
- Diamond Sea Glaze sliding door into salon, offset to starboard.
- Large C-shaped blue leather settee to port with room to sleep two, with storage below.
- Custom hi-lo expandable table for seven.
- Entertainment center opposite.
- Forward to port is the U-shaped galley.
- Forward to starboard is the helm station with large double seat with control panel and electronic displays.

GALLEY:

- Up to port.
- Corian island counter tops.
- Kitchen Aid microwave/convection oven.
- Gaggenau 4 burner stove, with cabinets above and drawers below.
- Sub Zero 5.1 cu. ft. refrigerator/freezer, **overhauled 2024**.
- Dual S/S sinks with Grohe faucets.

OWNER'S STATEROOM:

- Center queen berth with 6" custom mattress.
- Custom reading lamps.
- Large hanging lockers and large drawers.
- Large overhead hatch.
- Private door opens starboard to master ensuite head with vanity, large shower and Head Hunter head.

CREW OR CAPTAIN'S STATEROOM:

- At base of stairs below and to port is a single upper berth with Meile full-sized washer and dryer below and a hanging locker.

GUEST STATEROOM:

- Three steps down from companionway to starboard.
- 4 upper and lower berths with wall mounted reading lights.
- 2" raised panel mahogany doors.
- Large hanging locker and drawers.
- Opposite to port is the head with Head Hunter shower and vanity with drawers and mirror.

FLYBRIDGE:

- 2 Stidd seats at centerline.
- Seating forward of helm for seven in U-shaped settee with storage under.
- Separate A/C unit on bridge.
- Fresh water washdown.
- Hot and cold hand wash sink; beverage cooler to starboard.
- Noel Redman aluminum framing structure for flybridge hardtop; **new** Isinglass panels.
- Glendenning electric clutches, genset control and nav equipment controls.
- **New** upper Glendenning station controls.

ELECTRONICS:

- Garmin Radar/Plotter (with readings at bridge, helm and cockpit); 3 **new** Garmin screens at cockpit, helm and flybridge.
- Simrad AP20 autopilot.
- ICOM M127 with hailer.
- ICOM 710 SSB with remote on bridge.
- Garmin GPS, with reading at helm, bridge, cockpit.
- Simrad AP20 autopilot.
- New stereo system with Bose speakers.
- **New** Star Link internet.

EQUIPMENT:

- 30 kg Bruce anchor with 400' rode and 3/8" 30' chain.
- Fortress FX55 anchor with 400' rode.
- ACR RCL 100 searchlight.
- Dura Bright tuna lights – 2 large spot lights forward, two large flood lights aft, two side lights port and starboard.
- **New** BBQ grill.
- **New** bilge pumps and wiring.
- 2 **new** bait wells.
- Life raft, recently update.
- **New** EPIRB.
- 6 survival suits.
- USCG current sticker for fishing offshore.
- Rod holders on flybridge aft rail.

COMMENTS: MOSES is without a doubt the best combination of a "Downeast style" Wesmac design and build, with the highest quality finisher, Lyman-Morse offering the most handsome 50' Sportfisherman Cruisers. **MOSES** provides 3 steering stations, three staterooms with two heads, an 16 knot cruise provided by a single Cat 3412E diesel, 1400 hp, with only 2800 hours. She is also equipped with a 10 hp bow thruster, a rebuilt Westerbeke 32kw generator, new batteries, galley up, and 3 zone air conditioning in the enclosed flybridge. New Garmin Radar & GPS were installed at all three helm stations.

Please call us today for your inspection of this high quality sportfish. A new build would be exceed \$5 million today and take 2-3 years. Thank you for your interest.

Information & Features

Caterpillar V12 3412E (Engine 1)

Power: **1400 hp**

Dimensions

LOA: **50 ft**

Beam: **17 ft 6 in**

Max Draft: **6 ft 3 in**

Weights

Displacement: **60,000 lb**

Other

Designer: **Wesmac Custom Boats, Surry, ME**

Builder: **Lyman Morse, Thomaston, ME**

DISCLAIMER

Potential purchasers should assume that items on the vessel at the time of viewing, but not specifically listed on this specification sheet, are not included with the sale of the yacht. These specifications are believed to be correct but cannot be guaranteed. Specifications are provided for information purposes. Data was obtained from sources believed reliable but is not guaranteed by owner or brokers. Buyer assumes responsibility to verify all speeds, consumptions, capacities and other measurements contained herein and otherwise provided, and agrees to instruct his surveyor to confirm such details prior to purchase. Vessel subject to sale, price and inventory changes, and withdrawal from market without notice.

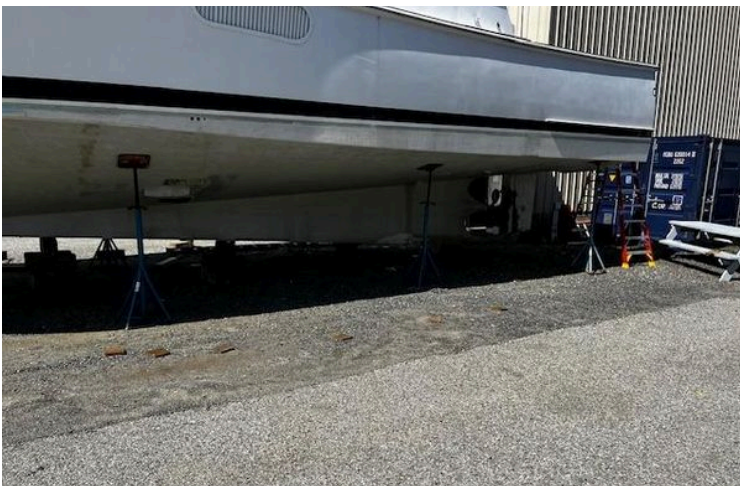
Mechanical Disclaimer: Engine and generator hours are as of the date of the original listing and are a representation of what the listing broker is told by the owner and/or actual reading of the engine hour meter. The broker cannot guarantee the true hours. It is the responsibility of the purchaser and/or his agent to verify engine hours, warranties implied or otherwise, and major overhauls as well as ALL other representations noted on the listing.

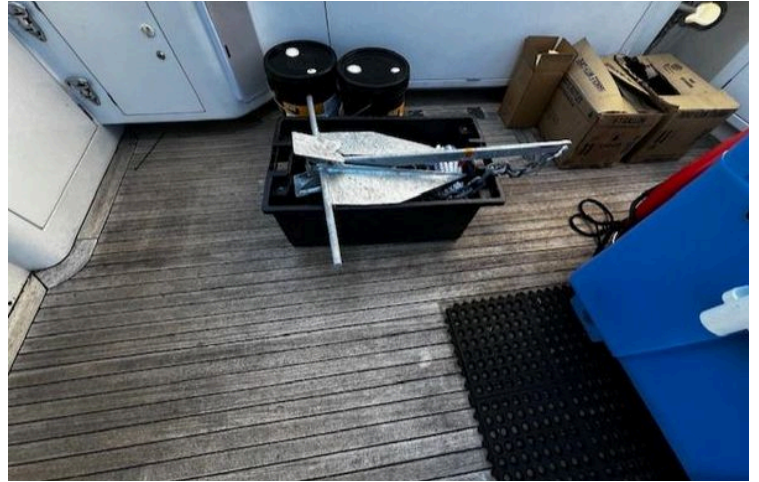
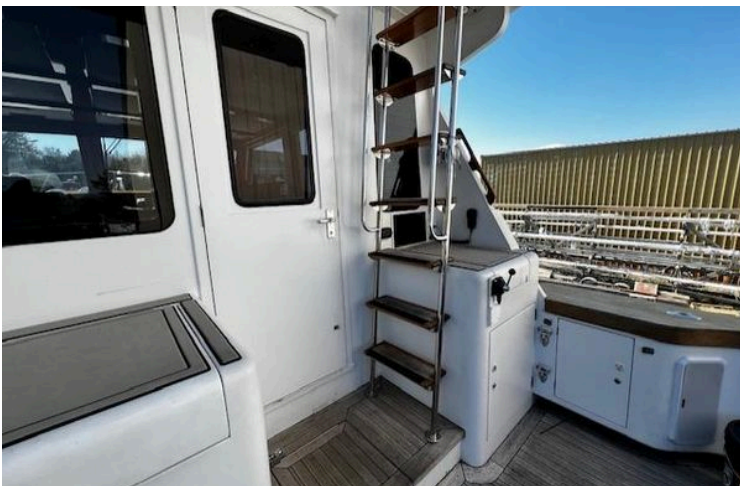
DISCLAIMER TO BOARD VESSEL: In the event the Buyer boards the vessel either on land or in the water without a broker or owner, the Buyer(s) agrees and understands he boards at his sole risk and liability.

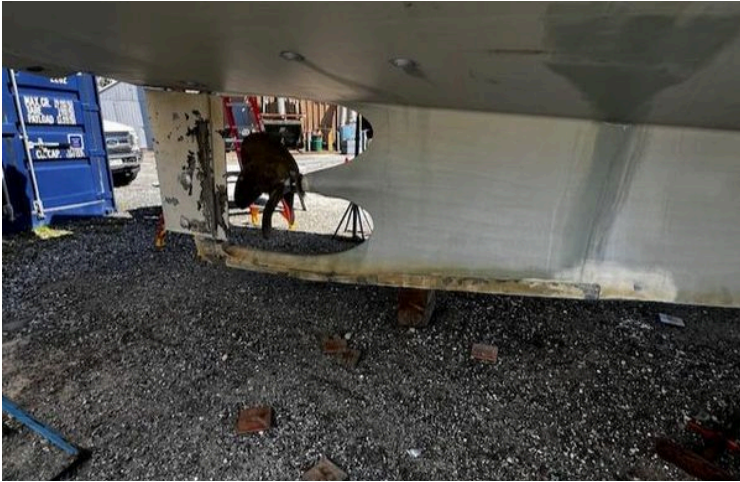
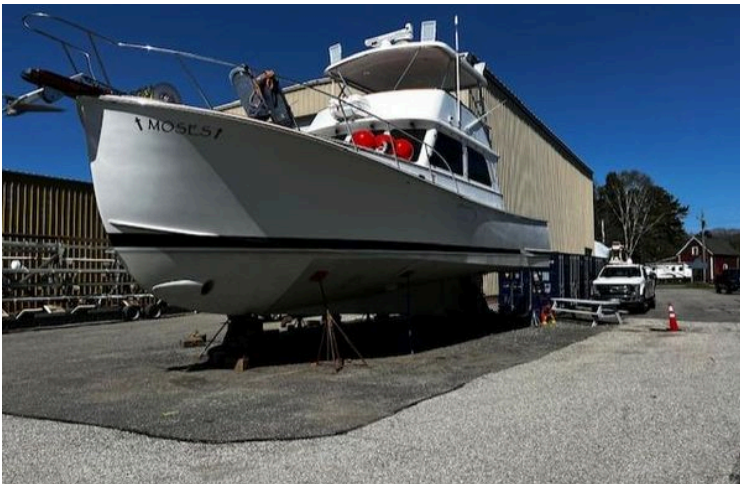


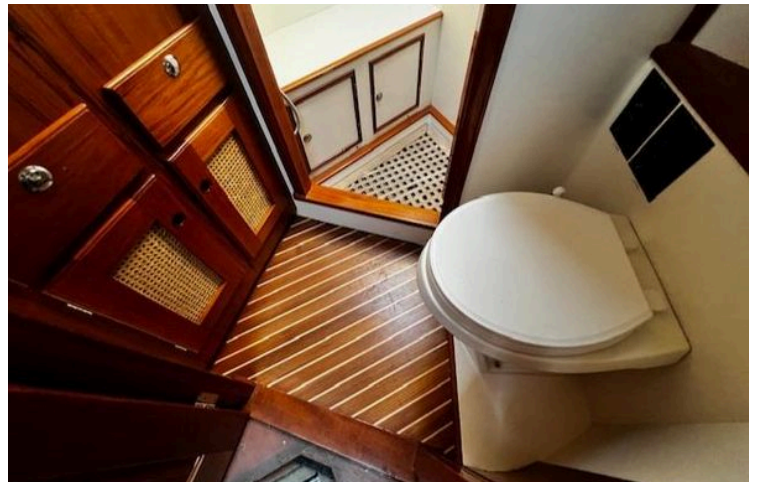






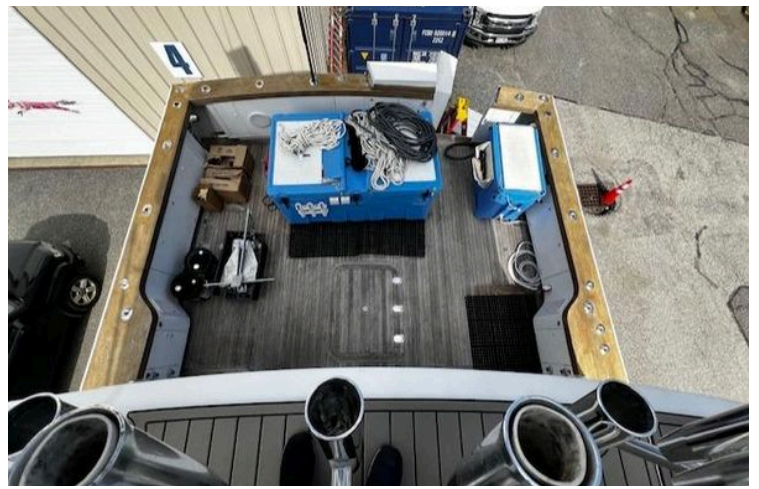












RPM	1500	1800
KW	25.0	32.0
KVA	25.0	32.0
VOLTS	220	120/240
AMPS	114	266/133
ENG. HP	53	67
ENG. SER. NO.	U1221-E208	
GEN. SER. NO.	844097	
PF/PHASE	1	1
WIRES	1	1
RATING	1	1

